



The remaining buildings comprising the former Williamsburg Shopping Center are undergoing significant renovations. Building 7 was significantly renovated ahead of Marshalls opening in the summer of 2019, with more renovations expected for the remaining canopy of Building 7 as well as Building 8 and 9.



BUILDING	SIZE	TENANT
7	42,636 SF	Multi-tenanted
8	32,500 SF	Food Lion
9	6,637 SF	Available
9	11,548 SF	Riverside

UNIT	SIZE	TENANT
Unit A	21,834 SF	Marshalls
Unit B	1,572 SF	Queen Nail Spa
Unit C	2,732 SF	Available
Unit D	2,043 SF	Available
Unit E	1,970 SF	Matchsticks BBQ
Unit F	5,808 SF	VA ABC
Unit G	6,677 SF	Sal's by Victor

BUILDING 9

6,637 SF AVAILABLE | ENTERTAINMENT - RECREATION - RETAIL

MIDTOWN ROW



Approximately 23,000 SF Divisible
Entertainment | Recreation | Retail

UNIT A
19,956 SF
AVAILABLE

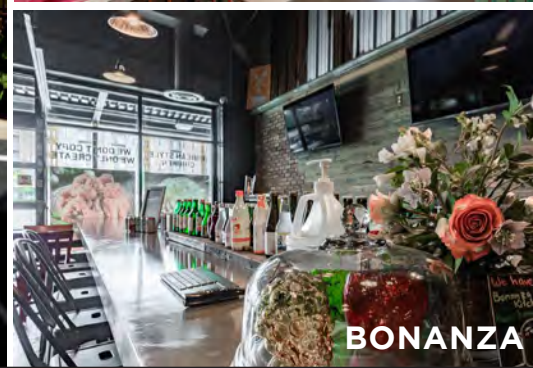
UNIT B
2,044 SF
AVAILABLE



CONCEPTUAL IMAGE



TINY TEXTURES



BONANZA

UNIT	SIZE	TENANT
Unit A Lower Level	17,292 SF	Available
Unit A Ground Level	2,664 SF	Available
Unit B Ground Level	2,044 SF	Available
Unit C1	1,203 SF	Tiny Textures
Unit C2	1,365 SF	9Round
Units D/E	3,675 SF	Available (Currently occupied by Soaps N Suds)
Units F/G	17,107 SF	Ace Hardware
Unit H	24,042 SF	Earth Fare
Unit J	3,135 SF	Nawab Cuisine
Unit K	1,050 SF	City Nails
Unit L	1,000 SF	Great Clips
Unit M	2,929 SF	Bonanza Social Kitchen
Unit N	2,571 SF	Fedex